

SCHWEIZER Catalogue Industry & Trade



Optical test and measuring instruments

Our commitment to quality begins where standard ends.

Optimal products in form and function, meticulously designed and reliably executed. SCHWEIZER has always made user-friendly product solutions combined with superior quality standards for industry and trade. Founded in 1840, SCHWEIZER is one of the oldest owner-managed companies in the German ophthalmic optics sector.

Our premium product range comprises the following product areas:

Basic-Line

Their favourable prices make Basic-Line products ideal for the entry-level segment. This extensive range featuring optical aids for multiple applications in hobby and leisure activities is impressive.

Tech-Line



Designed for use by experts in their daily work, Tech-Line products stand for technically sophisticated products that meet the requirements for high-quality optics, ergonomic handling, and robust materials suitable for everyday use. All magnifiers in the Tech-Line series are made in Germany and boast the following outstanding features:

- aplanatic silicate glass optics: scratch-resistant, distortion-free, high-contrast images, extended depth of field
- continuous product innovations such as the worldwide unique inductive charging technology for illuminated hand magnifiers
- modern, energy-saving, and durable high-performance SMD LEDs in 3 light temperatures
- housing with 2-component coating: robust, resistant to shock, hand perspiration, solvents, and chemicals
- ergonomic and modern design.

The TechMag series of electronic video inspection systems and TechLight LED lamps complete the professional range of technically outstanding products.

Your direct line to SCHWEIZER:

Telephone +49-9191-721058

industrie@schweizer-optik.de

www.schweizer-optik.de/industrie



Contents

<u>Illuminated hand magnifiers</u>	<u>4</u>
<u>Hand magnifiers/Handle magnifiers</u>	<u>9</u>
<u>Stand magnifiers/Measuring magnifiers</u>	<u>12</u>
<u>Linen testers</u>	<u>17</u>
<u>Watchmaker's loupes</u>	<u>20</u>
<u>Folding magnifiers/Pocket magnifiers</u>	<u>23</u>
<u>Headband magnifiers/Spectacle binoculars/ Clip-on magnifiers</u>	<u>28</u>
<u>Magnifier lamps/Table top magnifiers</u>	<u>33</u>
<u>Electronic video inspection systems</u>	<u>39</u>
<u>LED lamps</u>	<u>42</u>
<u>Promotional materials</u>	<u>44</u>



Illuminated hand magnifiers

Innovative, handy and practical:

SCHWEIZER's illuminated hand magnifiers are the result of the company's unparalleled expertise in magnifying optics. Illuminated hand magnifiers are ideal for portable use in multiple applications.

<u>Tech-Line INDUCTION illuminated hand magnifier</u>	<u>5</u>
<u>Tech-Line CLASSIC illuminated hand magnifier</u>	<u>6</u>
<u>Tech-Line MODULAR illuminated hand magnifier</u>	<u>7</u>
<u>Basic-Line illuminated hand magnifier</u>	<u>8</u>

Tech-Line INDUCTION illuminated hand magnifier

Thanks to their innovative inductive charging technology, Tech-Line INDUCTION illuminated hand magnifiers meet the highest professional requirements. These magnifiers take advantage of the innovative Qi wireless standard for charging, thereby eliminating the need to replace batteries. The magnifier's boost option ensures superior illumination in a choice of 3 light temperatures (warm white – 2700 K, neutral white – 4500 K and cool white – 6500 K).

- Power supply by induction – uninterrupted, effective charging process for continuous operation
- Easy-to-feel boost switch provides audible feedback when operated and controls 2 brightness levels for optimised lighting
- High contrast, even spread of light thanks to ideal adjustment of light intensity
- Low energy consumption, approx. 7 hours uptime (boost mode), approx. 3 hours charge time (with magnifier fully depleted)
- Ergonomic design and soft-touch zone for extra grip strength and pleasant feel
- 5 lenses with different powers, in 3 light temperatures each
- All magnifiers also available without charging pad and power adapter (item no. without "-1", e.g. 099222)
- Supplied with microfibre pouch for safe storage and cleaning
- Light temperatures: **2700 K** **4500 K** **6500 K**

Tech-Line INDUCTION illuminated hand magnifier



with charging pad and power adapter

099222-1	099242-1	099262-1	099422-1	099442-1	099462-1
2x / 4x / Ø 70 / 22.8 mm, biconvex/bifo			4x / Ø 55 mm, biconvex		
099822-1	099842-1	099862-1	099122-1	099142-1	099162-1
8x / Ø 30 mm, aplanatic			10x / Ø 30 mm, aplanatic		
099522-1	099542-1	099562-1			
15x / Ø 22.8 mm, aplanatic					

Accessories



150002 Charging pad

approx. 70x70 mm with 1.5 m USB cable

150012 Power adapter

for charging pad

Charging cradle



150022 Charging cradle with charging pad

Approx. 92x107 mm with 1.5 m USB cable, suitable for all Tech-Line INDUCTION illuminated hand magnifiers

150032 Charging cradle without charging pad

Approx. 92x107 mm without 1.5 m USB cable, suitable for all Tech-Line INDUCTION illuminated hand magnifiers

Tech-Line CLASSIC illuminated hand magnifier

Portable illuminated magnifier with advanced light technology in an ergonomic design. Clear Multi-Power benefits: boost switch for superior illumination and choice of 3 light temperatures (warm white – 2700 K, neutral white – 4500 K and cool white – 6500 K).

- Easy-to-feel boost switch provides audible feedback when operated and controls 2 brightness levels for optimised lighting
- High contrast, even spread of light thanks to ideal adjustment of light intensity
- High-performance SMD LEDs ensure low energy consumption
- Ergonomic design and soft-touch zone for extra grip strength and pleasant feel
- 5 lenses with different powers, in 3 light temperatures each
- Requires 3 AAA batteries (included)
- Supplied with microfibre pouch for safe storage and cleaning
- Light temperatures: **2700 K** **4500 K** **6500 K**

Tech-Line CLASSIC illuminated hand magnifier



090222 **090242** **090262** **090422** **090442** **090462**

2x/4x / Ø 70/22.8 mm, biconvex/bifo

4x / Ø 55 mm, biconvex

090822 **090842** **090862**

8x / Ø 30 mm, aplanatic

091022 **091042** **091062**

10x / Ø 30 mm, aplanatic

091522 **091542** **091562**

15x / Ø 22.8 mm, aplanatic

Accessories



504052 Cleaning and care set

Cleaning liquid, microfibre cloth in handy box

Accessories



130012 Microfibre pouch

for magnifiers Ø 70 und smaller, pack of 10

156002 Battery AAA

Alkaline, pack of 3

Tech-Line MODULAR illuminated hand magnifier

Battery-operated illuminated hand magnifier with SMD LED in modular design with interchangeable magnification heads. Illuminated handle unit enables the use of different magnification powers. Choice of 3 light temperatures (warm white – 2700 K, neutral white – 4500 K and cool white – 6500 K).

- Easily interchangeable magnification heads in different lens powers
- Magnification head can be angled to the right or left
- High contrast, even spread of light thanks to ideal adjustment of light intensity
- High-performance SMD LEDs ensure low energy consumption
- 5 lenses with different powers, in 3 light temperatures each
- Requires 3 AAA batteries (included)
- Supplied with microfibre pouch for safe storage and cleaning
- Light temperatures: **2700 K** **4500 K** **6500 K**



Tech-Line MODULAR set of illuminated hand magnifiers

By combining interchangeable magnification heads and handles in different light temperatures, the Tech-Line MODULAR sets of illuminated hand magnifiers offer professional users everything they need for a comprehensive analysis.

Tech-Line MODULAR illuminated hand magnifier



092022	094022	096022	092042	094042	096042
2x / 4x / Ø 70 / 22.8 mm, biconvex/bifo			4x / Ø 55 mm, biconvex		
092082	094082	096082	092102	094102	096102
8x / Ø 30 mm, aplanatic			10x / Ø 30 mm, aplanatic		
092152	094152	096152			
15x / Ø 22.8 mm, aplanatic					

Extra handle for Tech-Line MODULAR



092272 **092452** **092652**

Tech-Line MODULAR set of illuminated hand magnifiers



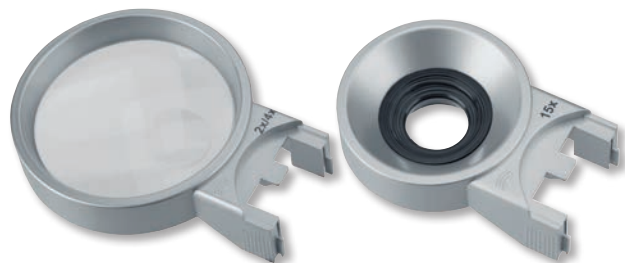
092802 **094802** **096802** **Set 1**

Contents: 1 handle + 3 magnification heads: 4x, 10x, 15x

094902 **Set 2**

Contents: 2 handles (4500 K + 6500 K)
+ 5 magnification heads: 2x, 4x, 8x, 10x, 15x

Tech-Line MODULAR magnification heads



09222	09224
2x / 4x / Ø 70 / 22.8 mm	4x / Ø 55 mm
09228	09230
8x / Ø 30 mm	10x / Ø 30 mm
09235	
15x / Ø 22.8 mm	

Basic-Line
illuminated hand magnifier

Battery-operated Basic-Line illuminated hand magnifier with powerful 5 mm LED (4500 K). Ideal for portable use in multiple applications.

- Clear illumination of the object viewed
- Aspheric plastic lenses
- Requires 3 AAA batteries (not included)

Basic-Line illuminated hand magnifier

Made in Germany



09104

4x / Ø 70 mm, aspheric

09106

6x / Ø 55 mm, aspheric

09108

8x / Ø 35 mm, aspheric

09110

10x / Ø 35 mm, aspheric

09115

15x / Ø 35 mm, aspheric

Accessories



504052

Cleaning and care set
Cleaning liquid, microfibre cloth in handy box

Accessories



130012

Microfibre pouch
for magnifiers Ø 70 und smaller, pack of 10

156002

Battery AAA
Alkaline, pack of 3



Hand magnifiers/ Handle magnifiers

The quality of the optics plays a significant role in the achieved visual performance. Premium silicate glass optics are a standard feature in all our Tech-Line hand and handle magnifiers. The aplanatic lens design ensures distortion-free vision.

Excellent imaging characteristics facilitate daily work and maximise optical performance.

<u>Tech-Line hand magnifier</u>	10
<u>Tech-Line handle magnifier</u>	10
<u>Basic-Line CLASSIC hand magnifier</u>	11
<u>Basic-Line BIFOCUS hand magnifier</u>	11
<u>Basic-Line FORTE hand magnifier</u>	11

Tech-Line hand magnifier

Equipped with an aplanatic lens system, the Tech-Line hand magnifier fulfils the highest optical demands. Made of silicate glass, the lenses are scratch resistant and distortion free, while providing an extended depth of field and high-contrast images. The black mount has a low-reflection surface. The handle is coated with a special 2-component finish and is thus resistant to hand perspiration and nearly all chemicals and solvents.

- Aplanatic silicate glass optics
- High-contrast images
- Robust and easy to clean
- High-quality, black-coated metal mount
- Supplied with microfibre pouch for safe storage and cleaning

Tech-Line hand magnifier



09802

2x/4x / Ø 90/22.8 mm, aplanatic

09804

4x / Ø 65 mm, aplanatic

Tech-Line handle magnifier

Handle magnifier in full-metal, solvent-resistant design.

- Aplanatic silicate glass optics
- High-contrast images
- Robust and easy to clean
- Supplied with microfibre pouch for safe storage and cleaning

Tech-Line handle magnifier



60128

8x / Ø 22.8 mm, aplanatic

60121

10x / Ø 22.8 mm, aplanatic

Basic-Line CLASSIC hand magnifier

Reading magnifier series with biconvex silicate glass lenses.

- Matt black, round plastic handle
- High-quality metal mount

Basic-Line CLASSIC hand magnifier

Made in
Germany



519002

2x / Ø 90 mm, biconvex

51100

2x / Ø 100 mm, biconvex

517502

2,5x / Ø 75 mm, biconvex

516002

3,5x / Ø 65 mm, biconvex

556502

4x / Ø 65 mm, biconvex

Basic-Line BIFOCUS hand magnifier

Reading magnifier series with biconvex silicate glass lenses and inserts (bifocal).

- Matt black, round plastic handle
- High-quality metal mount

Basic-Line BIFOCUS hand magnifier

Made in
Germany



537502

2,5x/5x / Ø 75/22.8 mm,
biconvex, bifocal

Basic-Line FORTE hand magnifier

Reading magnifier series with biconvex silicate glass lenses.

- Angular handle in conical design made of matt black plastic
- High-quality metal mount

Basic-Line FORTE hand magnifier

Made in
Germany



55120

2x / Ø 120 mm biconvex

55750

3,5x / Ø 75 mm, biconvex



Stand magnifiers / Measuring magnifiers

Stand and measuring magnifiers are ideal tools for planar inspections. Equipped with an aplanatic lens system, SCHWEIZER's Tech-Line stand magnifier series fulfils the highest optical demands.

Be it for checking fine details on printed media and documents, analysing cracks or examining surfaces – they are perfect for a wide range of professional applications.

Tech-Line FIX-FOCUS stand magnifier	13
Tech-Line VARIO-FOCUS stand magnifier	13
Tech-Line dual-scale reticles	13
Tech-Line VARIO-FOCUS stand magnifier set	14
Tech-Line illuminated stand magnifier	14
Tech-Line measuring magnifier	15
Basic-Line stand magnifier	16
Basic-Line SCALE stand magnifier	16
Basic-Line FIXED STAND stand magnifier	16

Tech-Line FIX-FOCUS stand magnifier

The FIX-FOCUS stand magnifier is ideal for planar inspections.

- Low-reflection, impact-resistant black lens mount
- High-quality aplanatic lens system for distortion-free viewing
- Transparent, impact-resistant housing facilitates insertion of reticle scales

Tech-Line FIX-FOCUS stand magnifier



09408

8x / Ø 30 mm, aplanatic



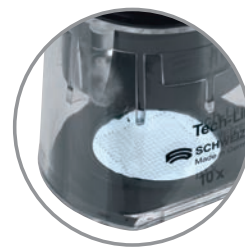
09410

10x / Ø 30 mm, aplanatic

Tech-Line VARIO-FOCUS stand magnifier

Design and features similar to Tech-Line FIX-FOCUS stand magnifier, additionally equipped with a focusable lens system.

Tech-Line VARIO-FOCUS stand magnifier



09508

8x / Ø 22.8 mm, aplanatic



09510

10x / Ø 22.8 mm, aplanatic

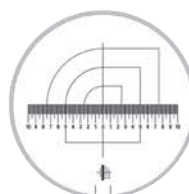
Tech-Line dual-scale reticles

SCHWEIZER Tech-line dual-scale reticles for multiple application areas. Mounted in a black plastic rim, the reticle is positioned slightly above the object to prevent scratches.

- Robust, scratch-resistant glass carrier for high-quality, modern Tech-Line reticles
- Hard chrome scale applied to the back of the glass carrier eliminates parallax errors

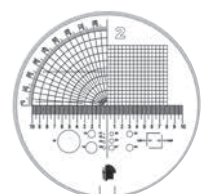


Tech-Line dual-scale reticles



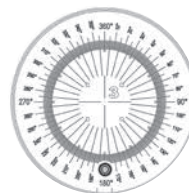
09450 Dual-scale 1

Ø 25 mm (standard scale)



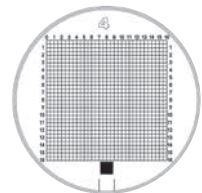
09460 Dual-scale 2

Ø 25 mm



09470 Dual-scale 3

Ø 25 mm



09480 Dual-scale 4

Ø 25 mm



09490 Dual-scale 5

Ø 25 mm

Tech-Line VARIO-FOCUS set of stand magnifiers

SCHWEIZER VARIO-FOCUS stand magnifier combined with high-precision dual-scale reticles.

- Set 1 includes the frequently used Tech-Line 1 standard scale
- Set 2 includes all 5 Tech-Line dual-scale reticles
- Supplied in sturdy storage box

Tech-Line VARIO-FOCUS set of stand magnifiers



09580 Tech-Line VARIO-FOCUS stand magnifier set 1

Contents: 1 VARIO-FOCUS stand magnifier 8x with dual-scale 1; in sturdy metal box measuring approx. 18.3x6.5x8.0 cm (WxHxD)

09590 Tech-Line VARIO-FOCUS stand magnifier set 2

Contents: 1 VARIO-FOCUS stand magnifier 8x with dual-scale 1–5; in sturdy metal box measuring approx. 18.3x6.5x8.0 cm (WxHxD)

Tech-Line illuminated stand magnifier

Equipped with an aplanatic silicate glass lens system, the Tech-Line stand magnifier fulfils the highest optical demands.

- High-quality aplanatic lens system for distortion-free viewing
- Housing with special 2-component coating, resistant to hand perspiration, many chemicals and solvents
- High-performance LED in 3 light temperatures (2700 K, 4500 K and 6000 K) for high-contrast images
- Light temperatures: **2700 K** **4500 K** **6500 K**

Tech-Line illuminated stand magnifier



093242 093442 093642

4x / Ø 60 mm, biconvex

093282 093482 093682

8x / Ø 30 mm, aplanatic

093212 093412 093612

10x / Ø 30 mm, aplanatic

Tech-Line measuring magnifier

Precision measuring magnifier in all-metal design with aplanatic silicate glass optics.

- Focus adjustable by sliding the eyepiece up and down
- Highly precise stainless steel scale
- 0.1 mm graduations
- High-quality aplanatic lens system for distortion-free viewing
- All-metal design

Tech-Line measuring magnifier



33400

6x / Ø 22.8 mm, aplanatic,
20 mm scale

33401

8x / Ø 22.8 mm, aplanatic,
10 mm scale

33402

10x / Ø 22.8 mm, aplanatic,
10 mm scale

Accessories



504052 Cleaning and care set

Cleaning liquid, microfibre cloth in handy box

Basic-Line stand magnifier

Stand magnifier for planar inspections.

- Plastic lenses

Basic-Line stand magnifier



32300

10x / Ø 30 mm, aplanatic

Basic-Line SCALE stand magnifier

Similar to Basic-Line stand magnifier, but with measuring scale.

- Plastic lenses
- Scale reading to 15 mm in 0.1 mm graduations

Basic-Line SCALE stand magnifier



33300

10x / Ø 30 mm, aplanatic

Basic-Line FIXED STAND stand magnifier

Stand magnifier with aplanatic silicate glass optics and open base

- High-quality aplanatic lens system for distortion-free viewing
- Base and housing made of plastic
- Focus adjustable by turning the eyepiece

Basic-Line FIXED STAND stand magnifier

Made in
Germany



32900

8x / Ø 22.8 mm, aplanatic



Linen testers

For decades, SCHWEIZER has defined excellence in the manufacture of linen testers with the high level of vertical expertise at its location in Forchheim. A quality difference you will notice, because our Tech-Line linen testers set the highest standards in terms of optical quality and longevity thanks to their silicate glass optics.

<u>Tech-Line APLANATIC linen tester</u>	<u>18</u>
<u>Tech-Line BICONVEX linen tester</u>	<u>18</u>
<u>Basic-Line PLASTIC linen tester</u>	<u>19</u>

Tech-Line APLANATIC linen tester

SCHWEIZER sets the standard in this market: premium aplanatic optics, silicate glass lens and maximum robustness.

- High-quality aplanatic lens system for distortion-free viewing
- Dull chrome-plated brass
- Available with or without 10 mm scale
- 0.1 mm graduations

Tech-Line APLANATIC linen tester



37300 with scale
8x / Ø 16.2 mm, aplanatic

37310 without scale
8x / Ø 16.2 mm, aplanatic

Tech-Line BICONVEX linen tester

High-grade SCHWEIZER Tech-Line quality combined with biconvex silicate glass lens.

- Biconvex optics
- Dull chrome-plated brass

Tech-Line BICONVEX linen tester



35500
5x / Ø 31.5 mm, biconvex

35400
6x / Ø 22.5 mm, biconvex

35300
8x / Ø 17.5 mm, biconvex

35200
10x / Ø 14.5 mm, biconvex

35100
12x / Ø 12.5 mm, biconvex

Accessories: Black leather case suitable for all linen testers



35101
for 35100

35401
for 35400

35201
for 35200

35501
for 35500

35301
for 35300, 37300 and 37310

Basic-Line PLASTIC linen tester

Light plastic linen tester with biconvex lightweight lens.

- Biconvex plastic lens
- Black plastic

Basic-Line PLASTIC linen tester



05030

3x/6x / Ø 45/13 mm, biconvex

05020

5x / Ø 30 mm, biconvex

05010

6x / Ø 20 mm, biconvex

05040

10x / Ø 15 mm, biconvex



Watchmaker's loupes

Watchmaker's loupes are ideal for processing and inspecting even extremely small test parts such as watches or pieces of jewellery. The optics used make the decisive difference.

SCHWEIZER leverages the quality of its Tech-Line series of watchmaker's loupes by using an aplanatic lens system that provides superior image sharpness. Made of silicate glass, the lenses are scratch resistant and distortion free, while providing an extended depth of field and high-contrast images.

<u>Tech-Line watchmaker's loupe</u>	<u>21</u>
<u>Basic-Line GLASS watchmaker's loupe</u>	<u>22</u>
<u>Basic-Line PLASTIC watchmaker's loupe</u>	<u>22</u>

Tech-Line watchmaker's loupe

SCHWEIZER's professional series offers decisive optical advantages for your daily work:

- High-quality aplanatic lens system for distortion-free viewing
- Housing with special 2-component coating, resistant to hand perspiration, many chemicals and solvents
- Housing with vent hole to prevent fogging on the inside
- Also available in practical set: 4 Tech-Line watchmaker's loupes combined in a sturdy plastic box

Tech-Line watchmaker's loupe



09706

6x / Ø 22.8 mm, aplanatic

09708

8x / Ø 22.8 mm, aplanatic

09710

10x / Ø 22.8 mm, aplanatic

09715

15x / Ø 16.2 mm, aplanatic

Tech-Line set of watchmaker's loupes



09790 Tech-Line set of watchmaker's loupes

Contents: 4 Tech-Line watchmaker's loupes 6x, 8x, 10x, 15x in a sturdy plastic box measuring approx. 18.3x6.5x8.0 cm (WxHxD)

Basic-Line GLASS watchmaker's loupe

Featuring a clear design, our Basic-Line watchmaker's loupe offers reliable optics.

- Biconvex silicate glass lens
- Black, low-glare plastic housing
- Housing with vent hole to prevent fogging on the inside

Basic-Line GLASS watchmaker's loupe

Made in
Germany



20030

3x / Ø 25 mm, biconvex

20240

4x / Ø 30 mm, biconvex

20040

4x / Ø 25 mm, biconvex

20050

5x / Ø 25 mm, biconvex

20250

5x / Ø 30 mm, biconvex

20070

7x / Ø 25 mm, biconvex

20270

7x / Ø 30 mm, biconvex

20010

10x / Ø 25 mm, biconvex

20210

10x / Ø 30 mm, biconvex

Basic-Line PLASTIC watchmaker's loupe

Watchmaker's loupe in all plastic design.

- Biconvex plastic lens
- Black, low-glare plastic housing

Basic-Line PLASTIC watchmaker's loupe



07170

5x / Ø 28 mm, biconvex

07171

7x / Ø 28 mm, biconvex

07172

9x / Ø 28 mm, biconvex



Folding magnifiers/ Pocket magnifiers

Folding and pocket magnifiers have always been practical and sturdy optical aids for professional applications and everyday use.

High-grade silicate lenses are the hallmark of SCHWEIZER's folding and pocket magnifiers.

<u>Tech-Line precision folding magnifier</u>	<u>24</u>
<u>Tech-Line precision folding magnifier set</u>	<u>24</u>
<u>Basic-Line STAINLESS STEEL folding magnifier</u>	<u>25</u>
<u>Basic-Line PLASTIC folding magnifier</u>	<u>26</u>
<u>Basic-Line ECONOMIC pocket magnifier</u>	<u>27</u>

Tech-Line precision folding magnifier

Pure innovation: first magnifier with intuitive single-hand operation. Thanks to its intelligent design and low weight, the magnifier fits well in the hand and promotes a steady grip – a clear advantage at higher magnification levels when working with only one free hand.

- Silicate glass lenses, unsurpassed sharpness, robust and easy to clean
- High-quality aplanatic lens system for distortion-free viewing
- Biconvex lenses for item no. 53350 and item no. 53550
- Housing with special 2-component coating, resistant to hand perspiration, many chemicals and solvents
- Intelligent design reveals the lens in a single hand movement
- Also available in practical set: 4 Tech-Line folding magnifiers combined in a sturdy plastic box



Tech-Line precision folding magnifier



53350

3x+3x+3x / Ø 38 mm, biconvex, incl. lanyard

09606

6x / Ø 22.8 mm, aplanatic

09610

10x / Ø 22.8 mm, aplanatic

09620

20x / Ø 16.2 mm, aplanatic

53550

3x+5x / Ø 38 mm, biconvex, incl. lanyard

09608

8x / Ø 22.8 mm, aplanatic

09615

15x / Ø 22.8 mm, aplanatic

Tech-Line precision folding magnifier set



09690

Contents: 4 Tech-Line precision folding magnifiers 6x, 10x, 15x, 20x in sturdy plastic box measuring approx. 18.3x6.5x8.0 cm (WxHxD)

Accessories



180902 Pack of 5 lanyards

Charcoal-grey

Basic-Line STAINLESS STEEL folding magnifier

Featuring a clear design, our Basic-Line folding magnifier series offers reliable optics:

- Silicate glass lenses, unsurpassed sharpness, robust and easy to clean
- Sturdy stainless steel housing



Basic-Line STAINLESS STEEL folding magnifier

Made in
Germany



53300

3x+3x+3x / Ø 30 mm,
biconvex

53100

3x / Ø 30 mm, biconvex

54600

4x+6x / Ø 30 mm, biconvex

53700

7x / Ø 30 mm, biconvex

Basic-Line STAINLESS STEEL folding magnifier

Made in
Germany



55526

6x / Ø 22.8 mm, aplanatic

55528

8x / Ø 22.8 mm, aplanatic

55823

10x/6x / Ø 22.8 mm, aplanatic

55521

10x / Ø 22.8 mm, aplanatic

55522

12x / Ø 22.8 mm, aplanatic

55525

15x / Ø 22.8 mm, aplanatic

Basic-Line PLASTIC folding magnifier

In angular or round design:

- Silicate glass lenses, unsurpassed sharpness, robust and easy to clean
- Black, low-glare plastic housing

Basic-Line PLASTIC folding magnifier round

Made in Germany



55060

6x / Ø 22.8 mm, aplanatic

55080

8x / Ø 22.8 mm, aplanatic

55010

10x / Ø 22.8 mm, aplanatic

55012

12x / Ø 22.8 mm, aplanatic

Basic-Line PLASTIC folding magnifier angular

Made in Germany



55226

3x+3x / Ø 22.8 mm,
planoconvex

55228

3x+5x / Ø 22.8 mm,
planoconvex

55221

4x+6x / Ø 22.8 mm,
planoconvex

55222

5x+7x / Ø 22.8 mm,
planoconvex

55223

7x+8x / Ø 22.8 mm,
planoconvex

55214

10x+10x / Ø 16.2 mm,
planoconvex

Accessories



55520 Matching carrying case

Suitable for all folding magnifiers up to Ø 22.8 mm.
Material: black leather

Basic-Line ECONOMIC pocket magnifier

Handy pocket magnifier with high-grade optics and biconvex silicate glass lens.

- Biconvex silicate glass lens
- Mount made from transparent plastic
- Protective case made from strong grain leather
- In angular or round design



Basic-Line ECONOMIC pocket magnifier round

Made in Germany



418642

3.5x / Ø 60 mm, graphite black

418612

3.5x / Ø 60 mm, red

418342

5x / Ø 30 mm, graphite black

418312

5x / Ø 30 mm, red

Accessories



504052 Cleaning and care set

Cleaning liquid, microfibre cloth in handy box

Basic-Line ECONOMIC pocket magnifier angular

Made in Germany



40064

3.5x / Ø 60 mm, graphite black



Headband magnifiers / Spectacle binoculars / Clip-on magnifiers

SCHWEIZER's Tech-Line headband magnifiers with metal-framed silicate glass lenses and powerful LED lighting offer maximum flexibility in the workplace.

Our Tech-Line Galilean systems – with headband or as spectacle binoculars for better vision at work: brilliant, clear images, individual adjustment and extremely lightweight.

Tech-Line BINO LED headband magnifier	29
Tech-Line GALILEAN headband magnifier	30
Tech-Line GALILEAN spectacle binoculars	30
Basic-Line RIDO-CLIP clip-on magnifier	31
Basic-Line ILLUMINATED headband magnifier	32
Basic-Line headband magnifier	32

Tech-Line BINO LED headband magnifier

SCHWEIZER's Tech-Line headband magnifiers with metal-framed interchangeable silicate glass lenses and powerful LED lighting offer maximum flexibility in the workplace.

- Highly robust metal design, black coated, low-reflection surface
- Tilttable LED unit (light temperature 6000 K) to adjust illumination
- May be worn over spectacles

Tech-Line BINO LED headband magnifier



25500 Tech-Line BINO LED headband magnifier

without interchangeable lens unit, batteries included

Interchangeable lens unit for Tech-Line BINO LED

- Flip-up interchangeable lens carrier for different magnifications: 1.85x to 3.5x
- Interchangeable lenses are resistant to scratching and nearly all chemicals and solvents
- Metal-framed interchangeable silicate glass lenses
- Extended depth of field

Interchangeable lens unit for Tech-Line BINO LED



25710 1.85x

25715 2x

25720 2.5x

25725 2.75x

25730 3x

25735 3.5x

Tech-Line BINO LED set of headband magnifiers

- Combination of Tech-Line BINO LED headband magnifier and various interchangeable lens carriers
- Tilttable LED unit to adjust illumination

Tech-Line BINO LED set of headband magnifiers



09900 Tech-Line BINO LED headband magnifier set 1

Contents: 1 Tech-Line BINO LED headband magnifier with batteries and 3 interchangeable lens units 2x, 2.5x, 3x; in sturdy plastic case measuring approx. 26 x 21 x 7.8 cm (WxHxD)

09910 Tech-Line BINO LED headband magnifier set 2

Contents: 1 Tech-Line BINO LED headband magnifier with batteries and 6 interchangeable lens units 1.85x, 2x, 2.5x, 2.75x, 3x, 3.5x; in sturdy plastic case measuring approx. 26 x 21 x 7.8 cm (WxHxD)

Tech-Line GALILEAN headband magnifier

For better vision at work. In addition to offering brilliant, clear images, it can be individually adjusted and is also extremely lightweight.

- Excellent optics due to multi-coated, scratch-resistant lenses for consistently crisp and clear images
- Precise, individual adjustment of both eyepieces to the relevant pupillary distance
- Highly comfortable, padded headband, adjustable to individual head size
- 2 models: for 340 or 450 working distance

Tech-Line GALILEAN headband magnifier



93143 Galilei 2.25x

for 340 mm working distance

93142 Galilei 2.25x

for 450 mm working distance

Tech-Line GALILEAN spectacle binoculars

Spectacle binoculars with tight, yet comfortable fit for viewing the fine detail in every operation.

- Excellent optics due to multi-coated, scratch-resistant lenses for consistently crisp and clear images
- Precise, individual adjustment of both eyepieces to the relevant pupillary distance
- Extremely lightweight and comfortable
- Elastic cable temples ensure a perfect fit around every head
- 2 models: for 340 or 450 working distance

Tech-Line GALILEAN spectacle binoculars



93141 Galilei 2.25x

for 340 mm working distance

93140 Galilei 2.25x

for 450 mm working distance

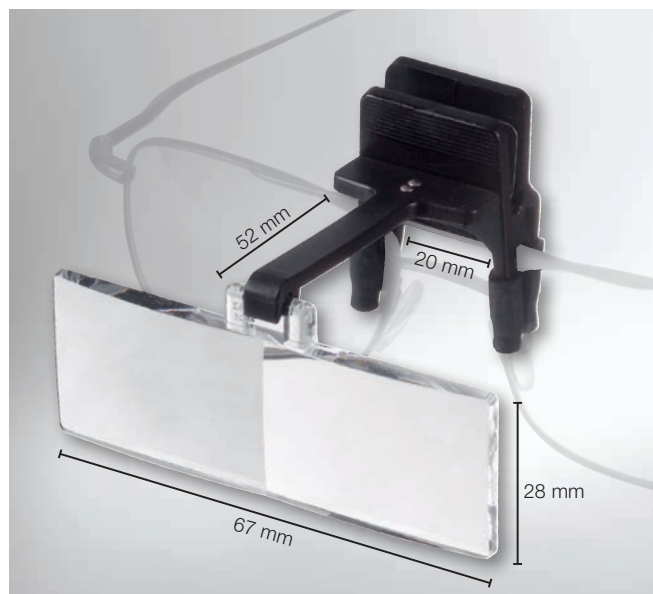
Technical data	Tech-Line GALILEAN spectacle binoculars 340 mm	Tech-Line GALILEAN spectacle binoculars 450 mm
Magnification	2.25 x	2.25 x
Working distance	340 mm	450 mm
Field of view	110 mm	130 mm
Depth of field	120 mm	190 mm

Refractive error	Tech-Line GALILEAN spectacle binoculars 340 mm	Tech-Line GALILEAN spectacle binoculars 450 mm
+2.00	440 mm	670 mm
+1.00	390 mm	560 mm
0.00	340 mm	450 mm
-1.00	300 mm	420 mm
-2.00	270 mm	370 mm

Basic-Line RIDO-CLIP clip-on magnifier

The binocular RIDO-CLIP is an easy-to-use visual aid that is simply clipped onto the spectacles of the user.

- 2 joined lenses with convergence supporting prisms
- Clips to the spectacles of the wearer
- Available in 1.75, 2.35 and 2.75 magnification power
- Hard coating
- Item no. 934011, 934021, 934031 supplied in solid box



Clip-on magnifier advantages:

- Lightweight
- Wide field of view
- Base-in prisms improve eye convergence
- Simply click onto spectacles for ease of use
- Allows hands-free activities

Basic-Line RIDO-CLIP clip-on magnifier



934021 1.75x / 3.0 D

for 250 mm working distance
RIDO-CLIP with 1 lens part

934011 2.35x / 5.5 D

for 180 mm working distance
RIDO-CLIP with 1 lens part

934031 2.75x / 7.0 D

for 125 mm working distance
RIDO-CLIP with 1 lens part

Basic-Line RIDO-CLIP set



934001 RIDO-CLIP set with all lens parts in a box

1.75x / 3.0 D / for 250 mm working distance
2.35x / 5.5 D / for 180 mm working distance
2.75x / 7.0 D / for 125 mm working distance

Basic-Line ILLUMINATED headband magnifier

The Basic-Line headband magnifier provides a very cost-effective alternative.

- Plastic lenses
- Individually adjustable head strap with hook and loop fasteners
- Additional flip lens increases magnification
- Lights attached to both sides
- Requires 4 AAA batteries (not included)



Basic-Line ILLUMINATED headband magnifier



07221 Basic-Line ILLUMINATED headband magnifier
with lighting and additional flip lens

Basic-Line headband magnifier

Basic version of a headband magnifier. For those who need no extras.

- Plastic lenses
- Individually adjustable head strap with hook and loop fasteners

Basic-Line headband magnifier



07220

Accessories

156002 Battery AAA

Alkaline, pack of 3



Magnifier lamps/ Table top magnifiers

The most remarkable feature of our popular Tech-Line LED magnifier lamps is their state-of-the-art LED lighting.

They are available in a choice of three light temperatures and can thus be individually adjusted to the relevant test object. Tech-Line magnifier lamps are fitted with the largest semi-rimless silicate glass lenses (202 mm diameter), ensuring a high depth of field.

Tech-Line LED magnifier lamp	34
Tech-Line STAND LED magnifier lamp	35
Basic-Line GOOSENECK magnifier lamp	36
Basic-Line SWING ARM magnifier lamp	36
Basic-Line magnifier lamp	36
Tech-Line table top magnifier	37
Basic-Line table top magnifier	38

Tech-Line LED magnifier lamp

The Tech-Line series features scratch-resistant glass lenses open to the front, which allows for a very comfortable work posture. Unlike versions with ring lighting, the field of view is not limited by the rim of the magnification head. Peripheral orientation is also no problem since it is easy to see past the lens.

- High-contrast, scratch-resistant silicate glass optics with high depth of field, available in lens diameters of 120 mm and 202 mm
- High-performance SMD LEDs provide bright, high-contrast illumination of the working area at minimal energy consumption
- Choice of 3 light temperatures (warm white – 2700 K, neutral white – 4500 K and cool white – 6500 K)
- 2-piece coated aluminium arm with table clamp, adjustable plastic joints and a spring balancing mechanism (action radius of approx. 1 m)
- Angled LED lighting in the 202 mm diameter model creates modelling shadows making it easier, for example, to identify scratches or cracks on surface structures
- Lenses optionally available with or without bifocal optics
- Light temperatures: **2700 K** **4500 K** **6500 K**

Tech-Line LED magnifier lamp



292722	292742	292762	292922	292942	292962
1.75x / 4x / Ø 202/40 mm, planoconvex, bifocal			1.75x / Ø 202 mm, planoconvex		

Tech-Line LED magnifier lamp



292822	292842	292862	292622	292642	292662
2x/3x / Ø 120/31.5 mm, biconvex, bifocal			2x / Ø 120 mm, biconvex		

Tech-Line STAND LED magnifier lamp

Tech-Line magnifier lamp with solid base stand.

- High-contrast, scratch-resistant silicate glass optics with high depth of field
- High-performance SMD LEDs provide bright, high-contrast illumination of the working area at minimal energy consumption
- Choice of 3 light temperatures (warm white – 2700 K, neutral white – 4500 K and cool white – 6500 K)
- Gooseneck arm and base stand
- Light temperatures: **2700 K** **4500 K** **6500 K**

Tech-Line STAND LED magnifier lamp



298222

298242

298262

2x/3x / Ø 120/31.5 mm,
biconvex, bifocal

298122

298142

298162

2x / Ø 120 mm,
biconvex

Accessories

298022-1 **298042-1** **298062-1** Spare 6 W LED bulbs
for all Tech-Line magnifier lamps

Accessories



504052 Cleaning and care set

Cleaning liquid, microfibre cloth in handy box

Basic-Line GOOSENECK magnifier lamp

The magnifier lamps in our Basic-Line series are sure to impress with an extremely favourable price/performance ratio and are also highly flexible to facilitate installation.

- Bifocal plastic lens with protective cover
- Gooseneck arm and base stand
- 12 W / 220 V
- Cool white light

Basic-Line GOOSENECK magnifier lamp



07212

3x/5x / Ø 85/20 mm, 12 W

Basic-Line SWING ARM magnifier lamp

- Biconvex glass lens
- Flexible stand construction, solid table base
- 22 W / 220 V
- Cool white light

Basic-Line SWING ARM magnifier lamp



07214

2x / Ø 125 mm, 22 W

Basic-Line magnifier lamp

- Biconvex glass lens
- Versatile stand construction with table clamp
- 22 W / 220 V
- Cool white light

Basic-Line magnifier lamp



07210 with table clamp

2x / Ø 125 mm, 22 W

Accessories

07212-1 12 W ring lighting

for Basic-Line GOOSENECK magnifier lamp

07214-1 22 W ring lighting

for Basic-Line magnifier lamp and Basic-Line SWING ARM magnifier lamp

Tech-Line table top magnifier

For professional use in the workplace: precision stand magnifier with innovative aplanatic bifocal optics (for Ø 90 mm)

- Silicate glass lenses, unsurpassed sharpness, robust and easy to clean
- High-quality aplanatic lens system for distortion-free viewing
- 300 mm flexible metal gooseneck arm
- Table base: die-cast, solid base coated with black plastic
- Easy conversion from table base to table clamp
- Metal, black coated table clamp

Tech-Line table top magnifier



31502 with table base

2x/4x / Ø 90/22.8 mm,
aplanatic, bifocal

31503 with table clamp

2x/4x / Ø 90/22.8 mm,
aplanatic, bifocal

31504 with table base

4x / Ø 65 mm,
aplanatic

31505 with table clamp

4x / Ø 65 mm,
aplanatic

Accessories



504052 Cleaning and care set

Cleaning liquid, microfibre cloth in handy box

Basic-Line GLASS table top magnifier

Versatile table top magnifier with round optics and gooseneck arm, optionally available with table base or table clamp.

- Biconvex glass lens
- Excellent imaging quality
- Circular metal rim
- Optionally available with table base or table clamp

Basic-Line GLASS table top magnifier

Made in Germany



31012 with table base 2x / Ø 120 mm, biconvex	31013 with table clamp 2x / Ø 120 mm, biconvex
31090 with table base 2.5x / Ø 90 mm, biconvex	31091 with table clamp 2.5x / Ø 90 mm, biconvex
31075 with table base 3x / Ø 75 mm, biconvex	31076 with table clamp 3x / Ø 75 mm, biconvex

Basic-Line PLASTIC table top magnifier

Versatile table top magnifier with round optics and gooseneck arm, optionally available with table base or table clamp.

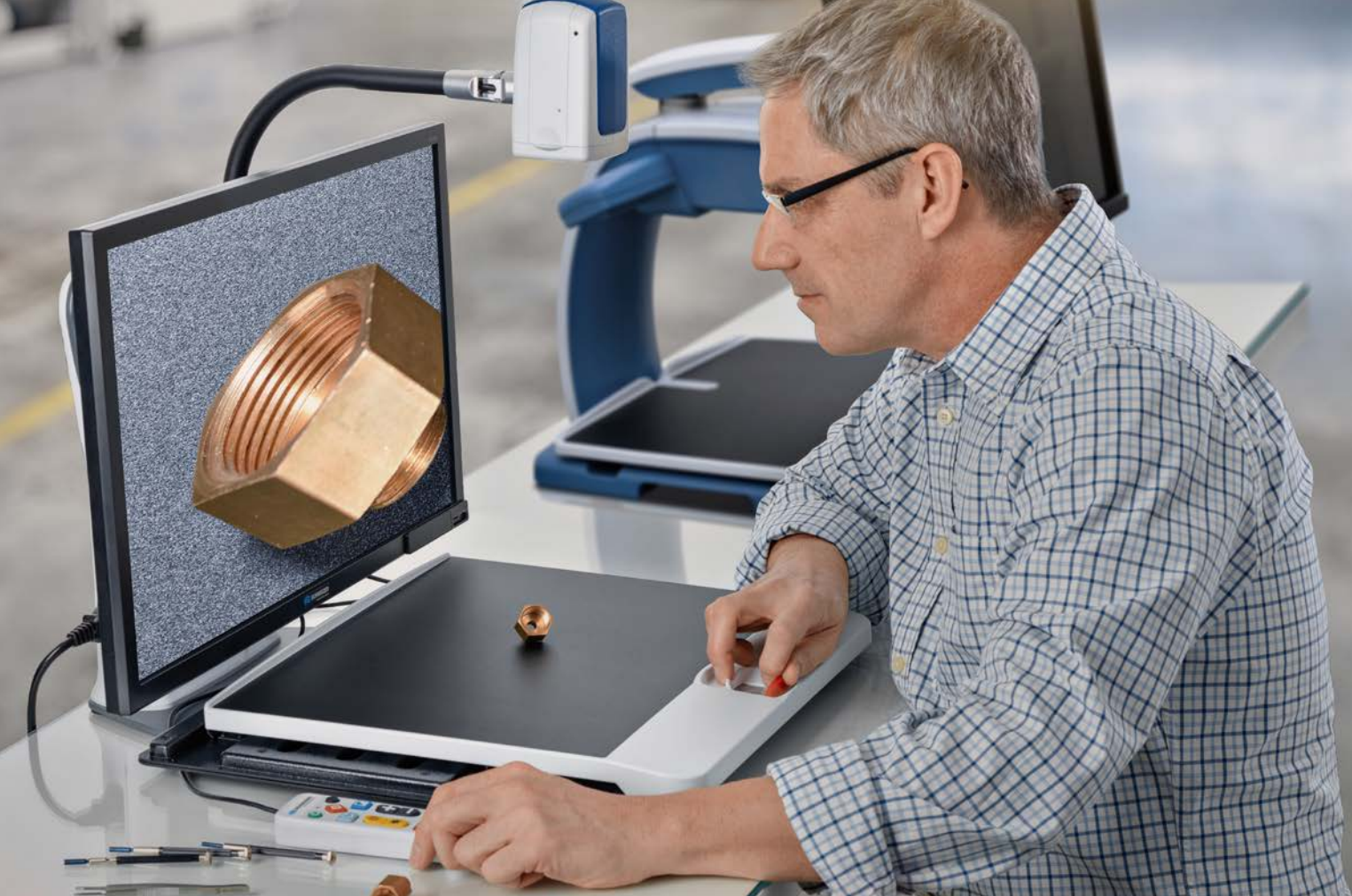
- Aspheric plastic lens
- Rectangular black plastic mount
- Optionally available with table base or table clamp

Basic-Line PLASTIC table top magnifier

Made in Germany



314002 with table base 3x / 100x75 mm, aspheric	31410 with table clamp 3x / 100x75 mm, aspheric
---	---



Electronic video inspection systems

High performance, premium quality and comfortable to use.

Featuring numerous useful functions, our two electronic video inspection systems are ideal for multiple applications and offer superior magnification.

<u>Tech-Line TechMag 240 HD flex Electronic video inspection systems</u>	<u>40</u>
<u>Tech-Line TechMag 240 Full HD Electronic video inspection systems</u>	<u>41</u>

TechMag 240 HD flex

Compact and mobile electronic inspection system. With unique color-boost contrast for even more contrast and brilliant colors – in HD quality. The flexible camera can be moved over three axes and offers comprehensive test object viewing. Plenty of space under the camera for universal uses. Integrated handle makes it easy to carry the device where it is needed.

- High-definition camera with autofocus
- 1.7x to 128x magnification
- Object viewing via 330° camera rotation (close-up, intermediate and distance) for professional inspections
- Settings can be saved for magnification, color setting and distance for each view
- Various display features such as freeze frame, shaded cells, and orientation line
- 41 cm clearance under the camera
- Wired control unit with large, color-contrasting function keys for intuitive handling
- Individually adjustable monitor tilt facilitates an ergonomic head position
- Flexible camera arm folds away behind the monitor for quick transportation
- 33 display modes, including true color, high-contrast colors (color-boost contrast), black and white, white on black, yellow on blue, yellow on black
- Incl. connectivity package: cable set for connecting the TechMag device to a PC or laptop

TechMag 240 HD flex



992422 TechMag 240 HD flex

Magnification: 1.7x to 128x
Weight: 7.3 kg
Dimensions (W x D x H): approx. 56 x 19 x 53 cm
Screen size: 23.6" (60 cm)
Incl. 2.5 m connecting cable

Accessories



999022 XY table

Dimensions (WxDxH): approx. 43 x 37 x 4.5 cm,
fully or partially lockable

Accessories

990012 TechMag Table

Trapezoidal, with lockable castors, height-adjustable,
silver-grey metal frame with dark grey top
Dimensions (W x D x H): approx. 80 x 60 x 65 – 91 cm

TechMag 240 Full HD

Convenient 24" video inspection system in optimized full HD quality for sharp imaging from edge to edge.

- 24" TFT monitor and 16:9 camera
- Magnification: 1.9x to 56x
- High-contrast imaging in full HD quality
- 21 cm working clearance under the camera
- Perfect and glare-free lighting of the work area with 4 power SMD LEDs
- Position indicator (point of light) for orientation
- Snapshot feature
- Autofocus for viewing objects of various heights
- Settings for magnification and color display can be saved
- Swivelling monitor, can be adapted to ergonomic needs
- On/off autofocus
- Find function
- Displayable reading line and reading mask
- Orientation guide (find function)
- 33 display modes, including true color, high-contrast colors (color-boost contrast), black and white, white on black, yellow on blue, yellow on black
- Large XY table (size W x D: approx. 44 x 41 cm), fully or partially lockable; with indentation to hold round objects in place
- Incl. connectivity package: cable set for connecting the TechMag device to a PC or laptop

TechMag 240 Full HD



992412 TechMag 240 Full HD

Magnification: 1.9x to 56x

Weight: 19.8 kg

Dimensions (W x H min./max. x D): 57 x 51/68 x 44 cm

XY table size: approx. 44 x 41 cm

Screen size: 24" (61 cm)

2 m connecting cable

Accessories



990012 TechMag Table

Trapezoidal, with lockable castors, height-adjustable, silver-grey metal frame with dark grey top

Dimensions (W x D x H): approx. 80 x 60 x 65 – 91 cm



LED lamps

The innovative SCHWEIZER TechLight LED lamp series has been specially developed for a wide variety of workplace applications and features numerous impressive details.

Sophisticated technology, durability thanks to selected materials, and an elegant design with elaborate functionality: Made in Germany.

TechLight

- 3 different product versions for different applications
- No disturbing glare thanks to matte black housing
- Easy-care, durable plastic surface
- Single-handed operation of the central keypad
- Flexible lamp positioning minimizes glare and ensures precise illumination
- Optimal user-friendliness thanks to large, smooth-action locking levers
- Lamp head can be swiveled in all directions and pulled down to the tabletop
- Can be folded to save space and for mobile use
- Very low energy consumption and high performance due to the use of 14 long-life LEDs
- 2 brightness levels (100% and 70%) for ideal lighting conditions
- Cool white and neutral white LEDs ensure high-contrast illumination

TechLight – Table lamp



941053 Table lamp with power adapter

Dimensions of base (WxDxH): approx. 13.5 x 17.5 x 12.0 cm
Length of arm segment (from joint to joint): approx. 30 cm
Weight: approx. 1.52 kg, connection cable: 150 cm



942053 Table lamp long arm with power adapter

Dimensions of base (WxDxH): approx. 13.5 x 17.5 x 12.0 cm
Length of arm segment (from joint to joint): approx. 30 cm each
Weight: approx. 3.65 kg, connection cable: 150 cm



943053 Table lamp long arm with table clamp and power adapter

Maximum clamp opening: 5.3 cm
Length of arm segment (from joint to joint): approx. 30 cm each
Weight: approx. 1.2 kg, connection cable: 150 cm



Promotional materials

Many products are ideal for customisation with your advertising logo. This way, your company name or logo will be remembered for a long time.

On the following pages, we have compiled a selection of representative products for you that are timeless and will make your company stand out.

<u>Basic-Line IDEAL hand magnifier</u>	45
<u>Basic-Line MEGA hand magnifier</u>	45
<u>Basic-Line reading bar</u>	45
<u>Basic-Line Visiolett® magnifier</u>	46
<u>Basic-Line bright field magnifier</u>	46
<u>Basic-Line Fresnel lens</u>	46

Basic-Line IDEAL hand magnifier

- Biconvex plastic lens
- Transparent mount and grey handle

Basic-Line IDEAL hand magnifier



07101

2x / 100x50 mm

07102

2x / Ø 100 mm

07103

2.5x / Ø 80 mm

07104

3x / Ø 60 mm

07105

4x / Ø 50 mm

Basic-Line MEGA hand magnifier

- Aspheric plastic lens
- Black or white plastic handle

Basic-Line MEGA hand magnifier



81600 White

6x / Ø 60 mm

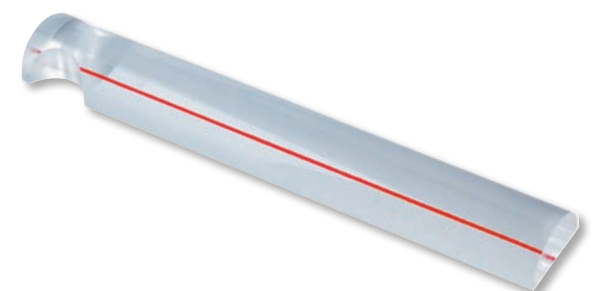
81601 Black

6x / Ø 60 mm

Basic-Line reading bar

- Made from pure optical plastic
- Integrated handle recess
- Vertical magnification
- Supplied with microfibre pouch for safe storage and cleaning

Basic-Line reading bar



433202 with ruler (20 cm)

1.5x / 200x25 mm

432202 with red guiding line

1.5x / 200x35 mm

432332 with red guiding line

1.5x / 330x35 mm

Basic-Line Visiolett® magnifier

- Silicate glass
- With white plastic rim or magnifier segment in tilted design without plastic rim

Basic-Line Visiolett® magnifier



930662 with plastic rim

1.8x / Ø 65 mm


930652 Magnifier segment in tilted design

1.8x / 25x65 mm

Basic-Line bright field magnifier

- Acrylic glass
- Concave bottom prevents scratching
- Black cloth pouch included

Basic-Line bright field magnifier



930672 1.8x / Ø 50 mm

930682 1.8x / Ø 65 mm

930692 1.8x / Ø 80 mm

930702 1.8x / Ø 95 mm

Basic-Line Fresnel lens

- Lens sizes range from credit card size to approx. A5 format
- Sheet thickness varies from approx. 0.35 to 0.5 mm depending on size
- Ideal reading aid that also serves as a handy bookmark

Basic-Line Fresnel lens



04040 black frame

2x / 120x80 mm

04050 black frame

2x / 220x160 mm

04025 white frame

3.5x / 80x30 mm

04030 transparent frame

2x / 160x60 mm

04010 transparent frame

3x / 80x45 mm





SCHWEIZER headquarters in Forchheim / Germany with a production area of 5500 m².

SCHWEIZER – expert knowledge since 1840

SCHWEIZER boasts Europe's largest and most innovative range of special vision aids. All glass lenses and (illuminated) magnifiers, LED lamps and many other products are produced at our site in Forchheim/Germany.

Turn our knowledge into your success and benefit from a reliable partner who offers product development, production expertise, and bespoke support training from a single source.

A. SCHWEIZER GmbH

Hans-Böckler-Straße 7, 91301 Forchheim, Germany

Telephone +49-9191-721058

industrie@schweizer-optik.de

www.schweizer-optik.de/industrie